

CASE STUDY



Main reception

ABN AMRO N.V.

Dubai Outsource Zone, Dubai, UAE.



Office area



Breakout areas (Accessible from both buildings)



Brief:

ABN-Amro is a leading International Financial Institution having a World Wide presence. Based on a strong foundation of entrenched corporate values and strategic business principles, it is serving private consumers as well as business and corporate.

Location:

Building B1 and B2, Dubai Outsource Zone, Dubai

Area:

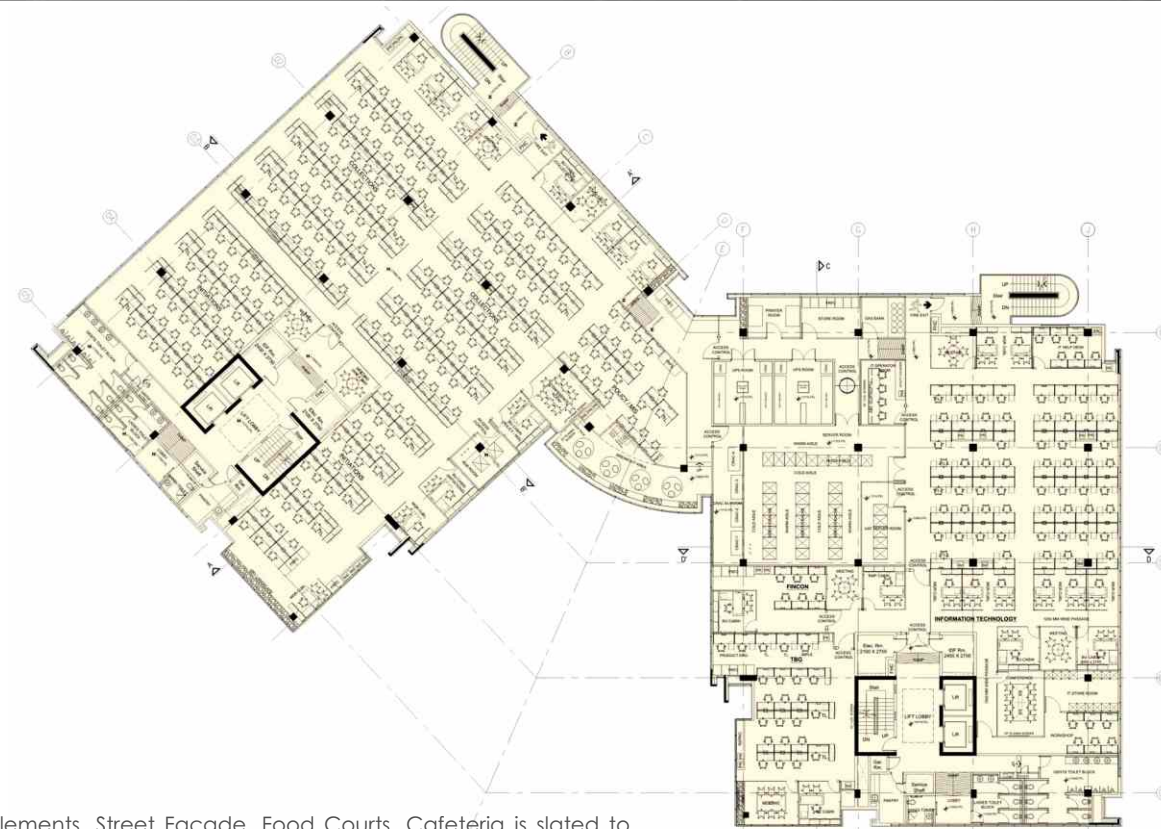
1,25,000.00 sq.ft.

Concept:

The concept was to have a non – cosmetic – minimalist approach towards achieving highly humanized and conducive environment and to create an ambience that would generate impetus for innovation, considering high density multi-departmental office requirements.



Meeting room



TYPICAL FLOOR PLAN

Challenge:

The challenge was to create a design of the new millennium which is mobile and autonomous in its attitude.

Design approach:

Consolidating Bank's back-office requirements and projections, this facility has been strategically designed to be a future ready facility. The common spaces have been designed to rejuvenate Occupants of the facility by providing a completely different and refreshing ambience by using a well balanced interplay of Colors, Materials, Forms and Volumes. Main reception and waiting lobby has striking Backdrop with Corporate Logo. The overall scheme is minimalist with a lot of natural light pouring in. Effort has been made to connect Outdoor Landscape Elements and Interior Space, by providing elements Like Dry Landscaping, Palm Trees, etc. Visitor Iceland adds a dash of color in otherwise simple yet elegant Floor. Cafeteria has been conceptualized based on a very innovative Theme of "European Street Cafe". With all its theme enhancement

elements, Street Façade, Food Courts, Cafeteria is slated to become a Melting Pot. Adequate Passage Widths & Circulation spaces have been provided to facilitate Integration of the spaces & people by functional proximity. Workstations & Cubicles are ergonomically designed & sizes have been designed based on functional requirements. Cabins have been designed to provide acoustical privacy & entertain visitors. Meeting & Conferencing spaces of various capacities have been spread across all the floors for easy availability & access. It has been designed with Color Glass Partitions, so that they can be easily identified after a quick glance around office.

Uniqueness:

This facility has been conceptualized through careful planning in which design decisions, material specifications are carefully evaluated in terms of their long term impact on the economic, social and environmental sustainability of a society and the natural environment, which is popularly known as "Green Design".



Cafeteria



Cafeteria



Entry to Cafeteria



Juice bar in Cafeteria