

CASE STUDY



+ Office area

**LIONBRIDGE**  
Mumbai, INDIA.



Office area



Office area



**Brief:**

Lionbridge is a leading globalization and outsourcing services provider that enables clients to develop, localize/translate, test, and maintain their enterprise contents and technology applications globally. Lionbridge proposed to set up an office space in Mumbai.

**Location:**

Mumbai

**Area:**

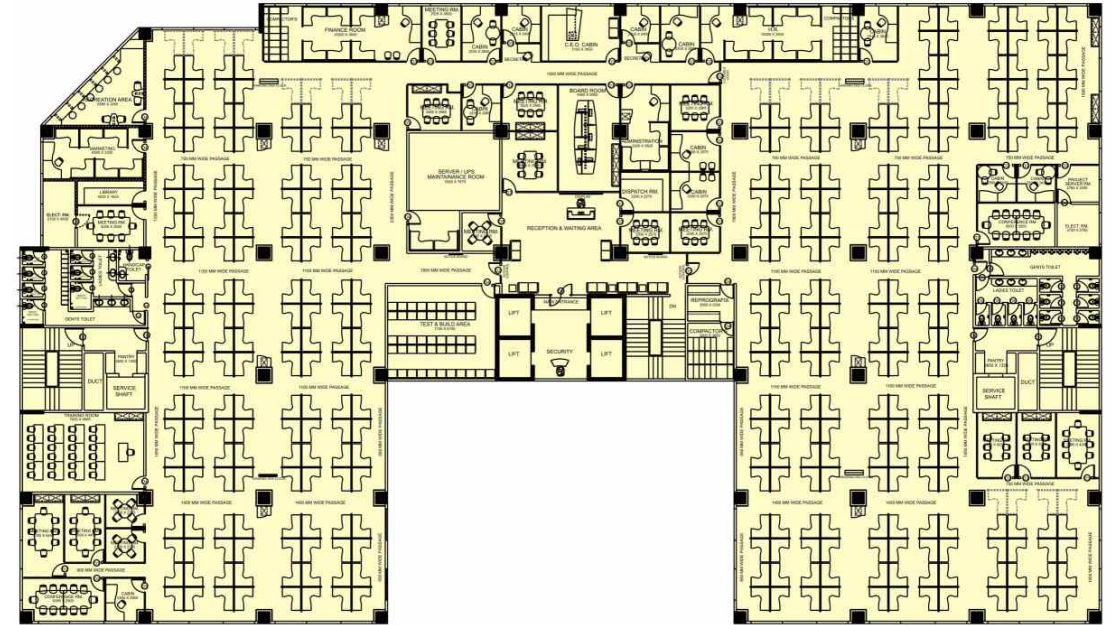
60,000 Sq. ft.

**Lionbridge's Outlook:**

Lionbridge wanted system furnitures, AC machines, light fittings, cabling, partitions and MS trusses designed in such a manner, so as to give a 'plug & play' option and at the same time giving it a very industrial look.



Office area



TYPICAL FLOOR PLAN

### Challenge:

The challenges were to create a look that gelled with the ideology of the company and to provide at least 80% returns in terms of the material used after the lease expires.

### Execution Approach:

The architects provided a simple planning of workstations that could be dismantled whenever required. The existing ceiling was painted black since it was unanimously decided not to have a false ceiling in order to take maximum advantage of the space and ceiling height. Sankalpan provided a simple metal framed structure that spanned across the entire ceiling and worked as a load bearing structure for all the electrical fixtures, wiring, piping and air-conditioning units provided.

### Uniqueness of the design:

The uniqueness lies in the entire electrical system i.e from the top, leaving the floor space free and the color that has been added through the various pipes and furniture systems. The total design solutions provided can be completely knocked down, except for the toilet blocks which was a part of the leased property.

