

CASE STUDY



+ Main reception

**PATNI**  
Pune, INDIA.



Passage



Office area



**Brief:**

Patni Computer Systems Ltd. is a leading global provider of Information Technology services and business solutions. In their endeavor to excel and expand Patni intended to set up a 'state of the art facility' in Pune.

**Location:**

Pune

**Area:**

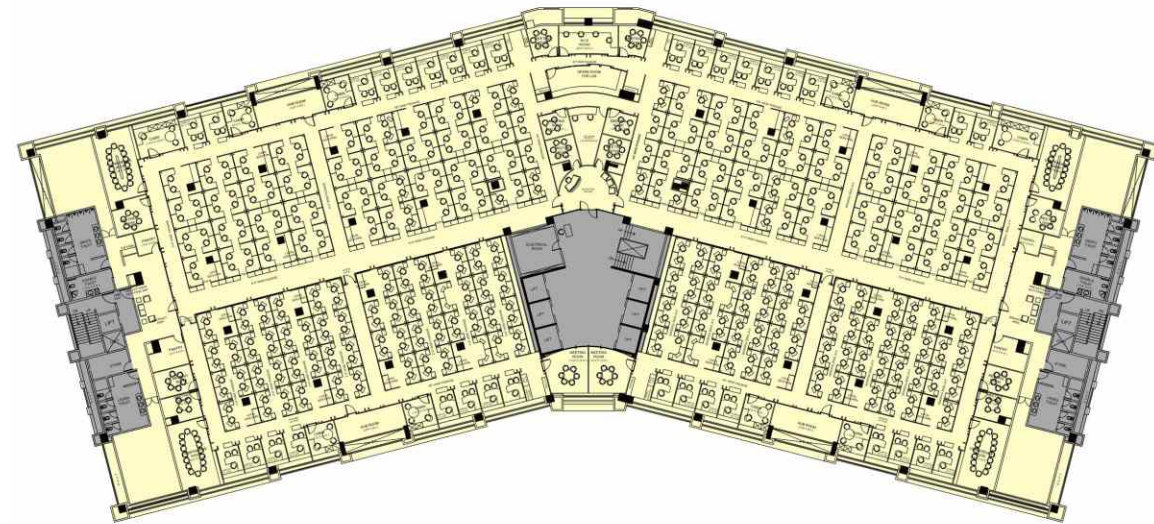
2,52,650 sq.ft.

**Patni's Outlook:**

It was the first time that Patni had outsourced a single point turnkey contract. Patni wanted Sankalpan to adhere to their standards within the estimated costs, planning parameters and maximum capacities without compromising on the quality.



Cafeteria



TYPICAL FLOOR PLAN

**Challenge:**

The major challenge was that Sankalpan had to use maximum efficiency and implement new elements for better aesthetics in terms of existing building services.

**Execution approach:**

The facility was spread over 6 floors. Most of the enclosures were organized along the periphery with major work areas in the center. The modular workstations were customized for mass production for the entire facility.

**Uniqueness of the design:**

Uniqueness lies in the four areas that were designed to form self sufficient development centers.

